



Folding partitions

DORMA Hüppe Variplan

Variplan. Unfolding the functionality.

DORMA Hüppe's flush-fashioned easy-action Variplan folding partition re-styles rooms to new requirements in just a few moments. And because its double skin construction ensures good sound and heat insulating properties, it also brings all the advantages of a stationary wall. As a composite panel construction, the system only takes up a minimum amount of space – whether open or closed.

The partition can be retro-fitted at any time – without the need for a bottom guide rail. Thus the floor retains its continuous, uninterrupted surface without any disruptive edges to spoil its appearance. A proven product offering innovative, variable room configuration for a variety of applications, DORMA Hüppe Variplan comes in a wide range of surface finishes and represents impressive value.

The partition runs on a ceiling-mounted rail. Provided the planning work can be done at a sufficiently early stage, the track can be installed so that it is flush with the ceiling surface. Otherwise, the rail is bolted onto the ceiling surface and then enclosed. Whether opened or closed, DORMA Hüppe Variplan blends harmoniously into any room. Installation is both simple and quick to complete.

Super-easy operation
Among the many advantages offered by this practical folding partition is its superb running smoothness. Plastic-wheeled and individually sprung track rollers mounted in ball bearings make DORMA Hüppe Variplan so easy to operate that the partition can literally be moved with the little finger. And the system also comes with TÜV-tested safety and the German GS mark of quality.



Contents	Page
DORMA Hüppe Variplan technology	3
Dimensions, data, functions	4–5
System design	6
Details	7
Specifications	8



DORMA Hüppe Variplan technology

1. The DORMA Hüppe Variplan partition presents a particularly smooth face. When closed, it has the same effect as a stationary wall. The underlying material is, in fact, 13 mm 3-ply quality particleboard, and the double skin construction ensures good noise and heat insulation.

2. The lever and spring mechanism guarantees an absolutely flush surface when the partition is extended. And it also provides the system with maximum stability. If through-access is needed, only the elements corresponding to the required opening width need to be moved.

3. A timeless actuating handle (available in white or brown) initiates the easy folding/unfolding motions.
4. And padded friction bolts (wing holders) enable the DORMA Hüppe Variplan partition to be secured at any position.

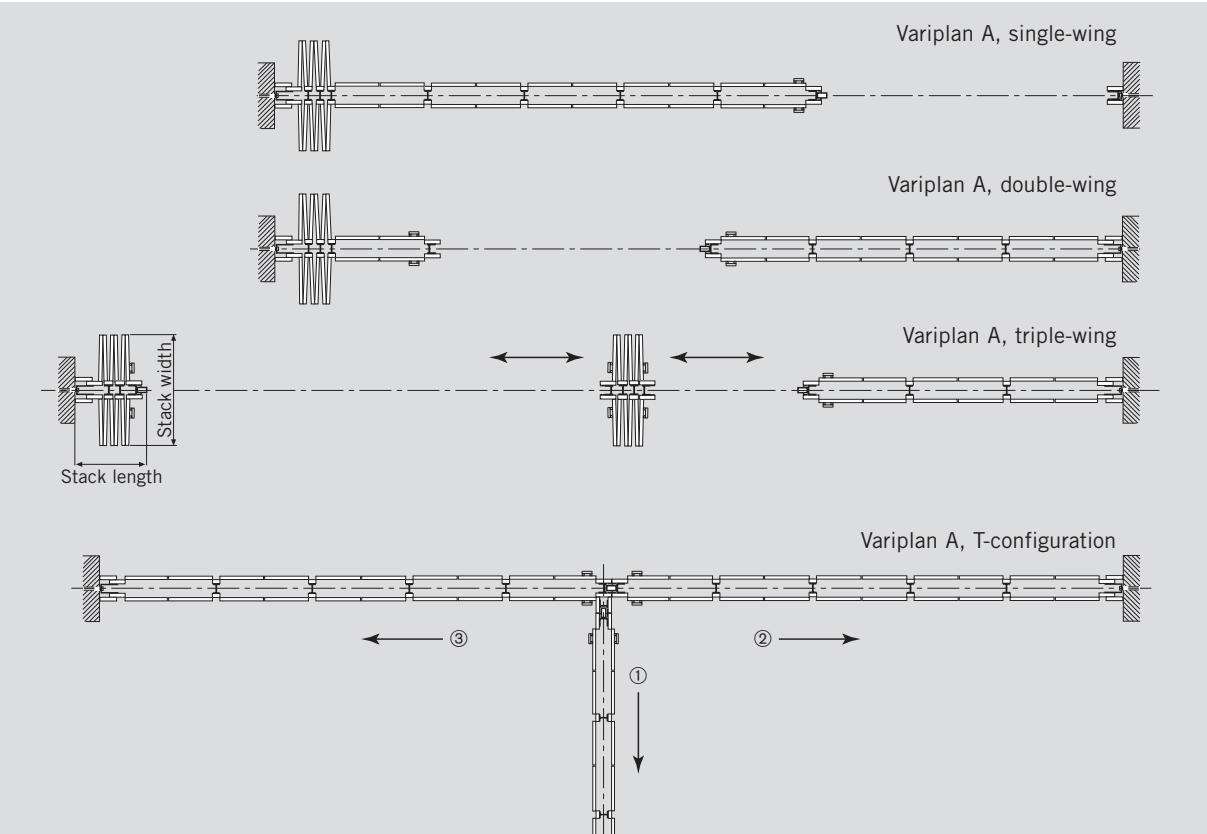
5. Plastic-wheeled track rollers mounted in ball bearings run on an aluminium rail fixed to the ceiling. The rollers are individually sprung for maximum ease of operation and minimal operating noise.

6. Even when the partition is open, the panel stack exudes elegance.

7. No floor guide. The continuous floor surface thus remains intact.

8. Bottom brush seal for sound attenuation.
- Sound insulation:**
 - Basic equipment with bottom brush seal $Rw^* = 24 \text{ dB}$
 - Additional top brush seal with recessed track rail $Rw^* = 30 \text{ dB (option)}$

*Weighted sound reduction value per DIN EN 20140

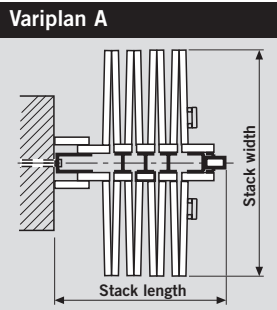


Variplan – Dimensions, data, functions		Variplan A	Variplan S
Configuration:	Single-wing	■	
	Symmetric double-wing	■	
	Asymmetric double-wing	■	
	Triple-wing for very large widths (central stacking arrangement movable)	■	
Flush surface when partition closed		●	
Surface	Real wood veneer	■	
	Laminate	■	
Installation height		3200 mm	
Width		850 – 11914 mm	1980 – 12220 mm
Number of panels		2 – 30	5 – 28
Combination of several systems		○	
Customised panel widths/pitch		●	–
Reduced stacking width with larger stack length		○	–
Stack width		variable	460 mm
Adapter panels or wall abutment extension		–	●
Double-skin construction		●	
Sound attenuation Rw = 24 dB		●	
Enhanced sound attenuation Rw = 30 dB		○	
Top brush seal		○	
Bottom brush seal		●	
Stacking	In through-passage area	●	
	3rd (movable) wing stack	W > 11914 mm	W > 12220 mm
	Niche enclosure	■	
	Panelled enclosure	■	
	With moving rear wall panel	○	
Personnel access for easy passage		●	
Easy operability		●	
Low-noise operation		●	
Floor guide		–	
Wing holders		○	
Individually sprung track rollers		●	
Delivered in easy-to-install individual segments		●	
Installation by DORMA Hüppe		○	
Suitable for retrofitting		●	
TÜV-tested and approved		●	
GS quality-tested		●	

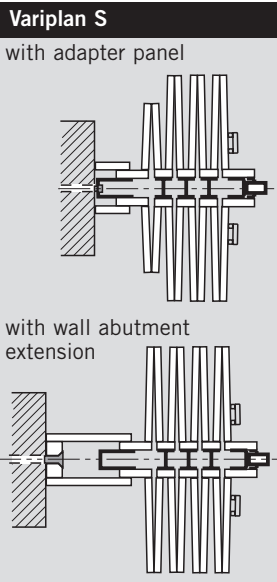
● Standard – No ○ Option ■ Alternative

Key to tables overleaf

x	Number of panel pairs	Variplan A	Customised panels
a	Panel width (pair)	Variplan S	With adapter panels and/or wall abutment extension
A	Niche depth		
B	Niche clearance width	WA	Wall abutment element
LB	Clear width	AL	Adapter panels
LH	Clear height	PB	Stack width
		PL	Stack length



The DORMA Hüppe Variplan A system is always tailored to the application. The panel sizes are individually adapted and all have the same dimensions. This produces an optimum ratio between opening width and panel width.



The DORMA Hüppe Variplan S system comprises panels of a prefabricated standard width. Adaptation to the structural width of the application is thus achieved either through the use of one or two adapter panels, or a wall abutment extension. This matches the advantages of low-cost manufacturing to the individual requirements of the building concerned.

Variplan A – Dimensional table – Figures in mm							
Clear width (LB)		Number of panel pairs (x)		Stack length (PL)		Stack width (PB)	
Single-wing	Double-wing	Single-wing	Double-wing	Single-wing	Double-wing	Single-wing	Double-wing
850		2		246		380	
1099		3		304		350	
1409		4		362		350	
1730		4		362		430	
2120		5		420		430	
2510		6		478		430	
2900	2900	7	8	536	362	430	375
3290	3290	8	8	594	362	430	425
3680	3680	9	10	652	420	430	387
4070	4070	10	10	710	420	430	426
4110	4110	11	10	768	420	400	430
4500	4500	12	12	826	478	401	397
4890	4890	13	12	884	478	403	430
5280	5280	14	14	942	536	405	402
5670	5670	15	14	1000	536	407	430
6060	6060	16	16	1058	594	408	406
	6450		16		594		430
	7230		18		652		430
	8010		20		710		430
	8790		22		768		430
	9570		24		826		430
	10350		26		884		430
	11130		28		942		430
	11910		30		1000		430

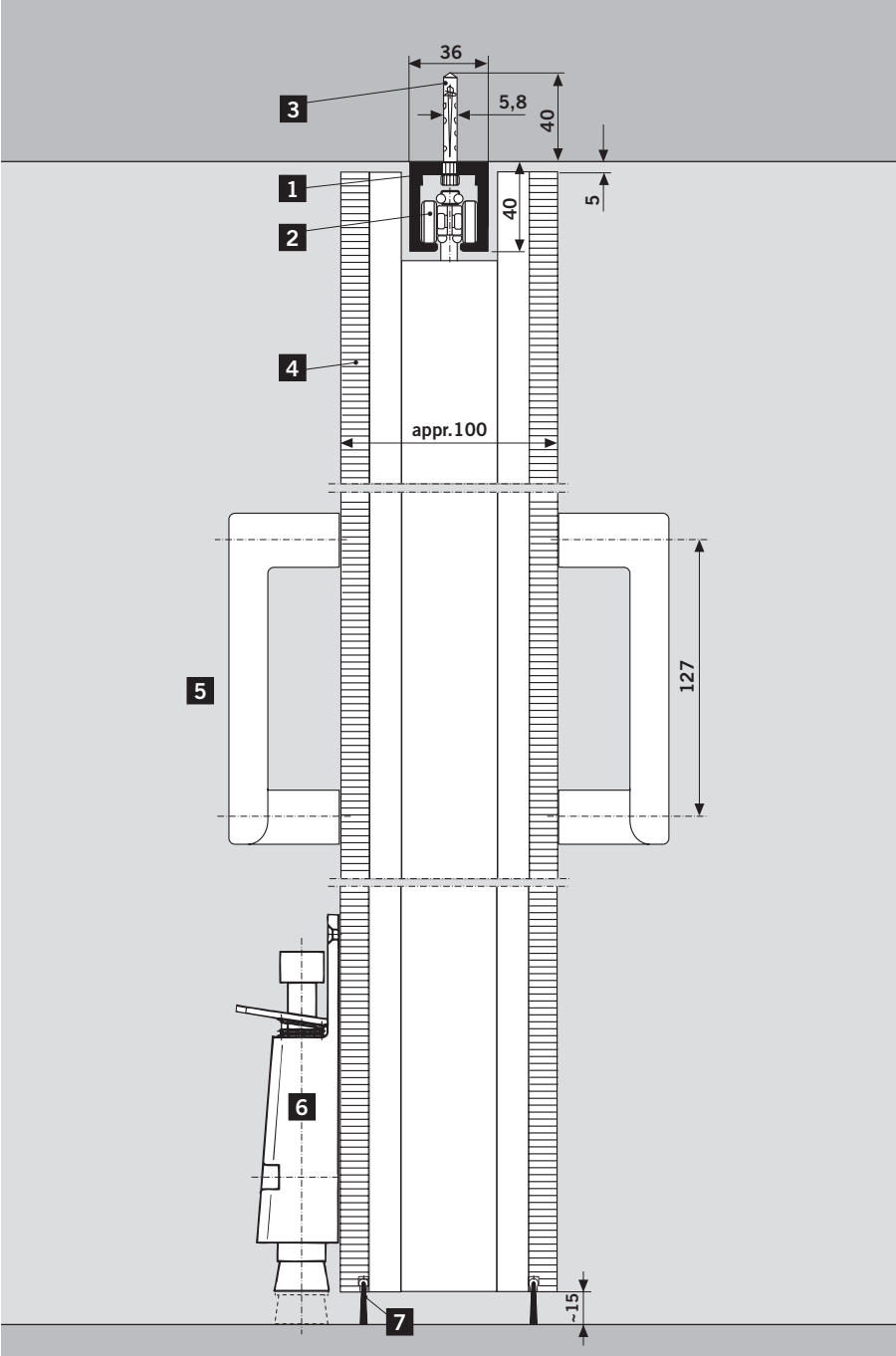
Variplan S – Dimensional table – Figures in mm									
Clear width (LB)		Number of panel pairs (x)						Stack length (PL)	
Single-wing	Double-wing	Single-wing	WA	AL	Double-wing	WA	AL	Single-wing	Double-wing
2000		5		●				420	
2395		5	●					545	
2815		6	●					603	
3225		7	●					661	
3655		8	●					719	
4075	4075	9	●		10		●	777	420
4660	4660	11		●	10	●		768	543
5080	5080	12		●	12		●	826	478
5500	5500	13		●	12	●		884	601
5920	5920	14		●	14		●	942	536
	6340				14	●			659
	6760				16		●		594
	7180				16	●			717
	7600				18		●		652
	8020				18	●			775
	8440				20		●		710
	8860				20	●			833
	9280				22		●		768
	9700				22	●			891
	10120				24		●		826
	10540				24	●			949
	10960				26		●		884
	11380				26	●			1007
	11800				28		●		942
	12220				28	●			1065

Stack width: standard 460 mm

Variplan panel and suspension arrangement

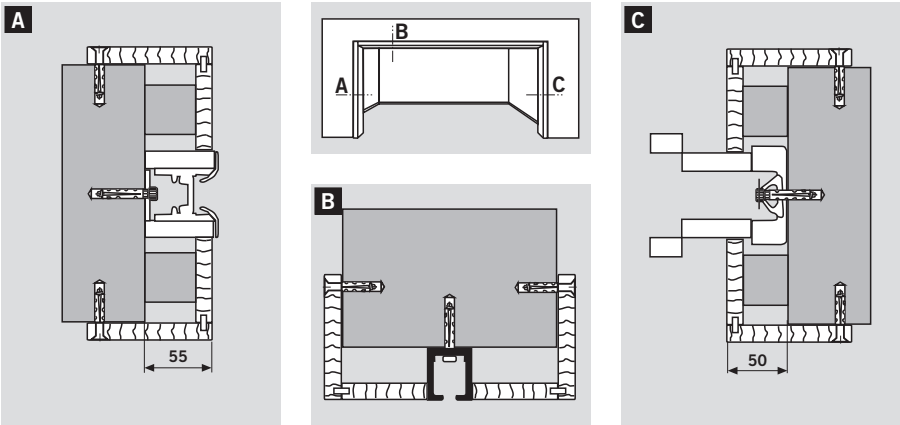
System design

- 1 Ceiling track rail
- 2 Carrier
- 3 Ceiling fixing
- 4 Component boards
- 5 Handle
- 6 Wing holder (optional)
- 7 Bottom seal (standard)



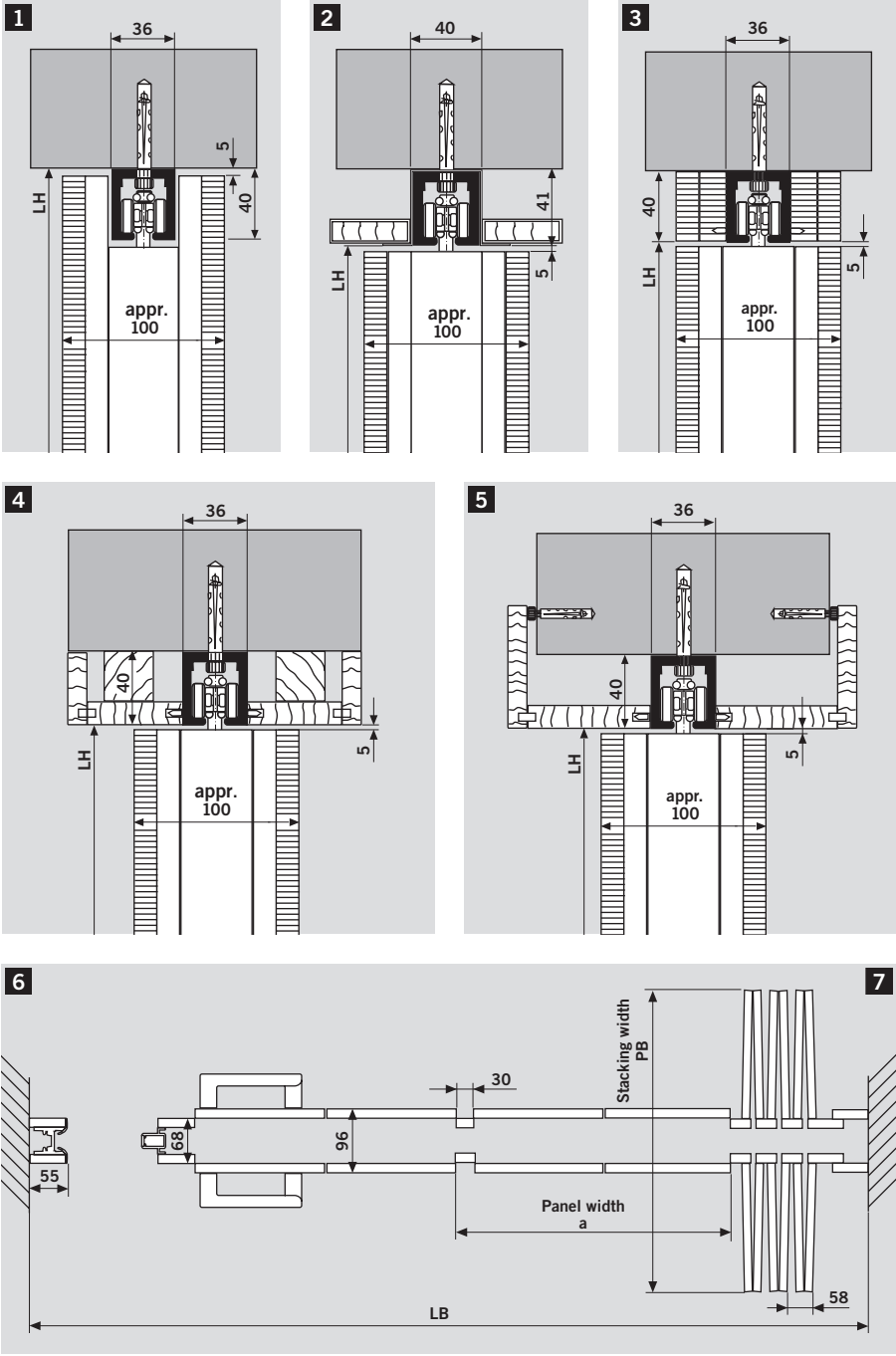
Cross sections

- A Through the abutment at the lock end, with clad enclosure.
- B Through the ceiling-mounted rail, with clad enclosure.
- C Through the abutment at the stacking end, with clad enclosure.



Ceiling mounting system

- 1 Aluminium track rail through-bolted to ceiling joist.
- 2 Aluminium track rail with retainer profile for placement of the suspended ceiling.
- 3 Aluminium track rail with strip cladding.
- 4 Aluminium track rail with surface enclosure.
- 5 Aluminium track rail with transom enclosure.

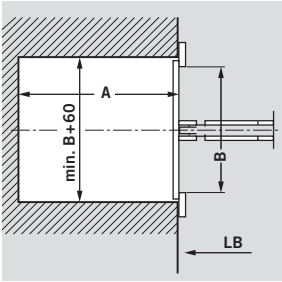


Masonry connection (abutments)

- 6 Connection to masonry at the lock end.
- 7 Connection to masonry at the stacking end.

Niche

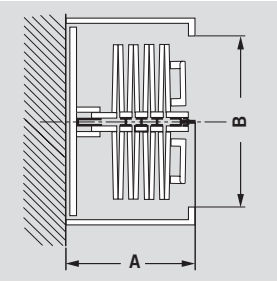
If a concealed enclosure for the DORMA Hüppe Variplan stack is required, the structural plan should ideally provide for a recessed niche. This will enable the entire clear width (LB) to be used for through passage when the partition is retracted. The precise niche dimensions should also be indicated in the partition order (seals the enclosure entrance when partition extended).



A = Stack length + 50
B = Niche clearance width

Panelled stack enclosure

It is also possible to provide a stack enclosure as a retrofit solution. Here, it is advisable to adopt the same surface finish/same appearance for the enclosure as that of the adjoining walls. The systems illustrated here both show a moving rear wall panel (seals the enclosure entrance when partition extended).



A = Stack length + 50
B = Niche clearance width (min. 420)

Specifications

The partition extends to produce a flush-aligned surface giving the appearance of a stationary panelled wall. The panels open and close individually for maximum ease of operation, the first panel pairs move to produce a through-passage access while the rest of the partition remains fully extended.

The connection between the individual panel pairs is provided by high-quality textile belting, thus avoiding the functional and visual disadvantages of metal hinges.

The partition system is suspended from a precision-extruded aluminium track rail.

Dimensions 36 x 40 mm, with plastic-wheeled steel rollers mounted in ball bearings to ensure quiet and easy operation. All roller carriers are sprung.

Easy extend/retract operation thanks to spring and lever mechanism.

No floor guide rail required. The pull force for opening and closing is max. 20 N.

On closing, each panel pair moves in sequence.

This means that only that number of panel pairs are pulled out to flush alignment as are required (the rest of the stack remains in position against the wall).

Spring-mounted wall abutments (stacking end).

A-range: Customised, symmetrical pitch dimensions (no adapter segments).

S-range: Prefabricated standard panel widths with adapter panels or wall abutment extension.

Panel construction

Double-skin hanging assembly. Each skin in the form of a 13 mm thick E1 3-ply quality particleboard to give maximum stability.

Partition thickness/width

Partition extended = approx. 100 mm; partition opened = approx. 400 mm. Weight approx. 24 kg/m².

Sound attenuation by means of a bottom brush seal in contact with the floor surface.

General quality management, ISO certificate

System manufactured on the basis of a quality management system registered to DIN EN ISO 9001.

Certificate No: Valid until

Item 1

..... nos. Folding partition system, Range A, as described above,

..... -wing configuration

Clear width: mm

Clear height: mm

Suspension height: mm

Surface finish:

.....

Sound insulation

requirement: Rw dB with test certificate

Track rail system: Aluminium

Make:

Type:

The unit price includes delivery and

installation ready for operation U.P.

Item 1a

Supplement for lock with Europrofile cylinder

Item 1b

Wing holders, price each

Item 1c

Moving rear wall

Item 1d

Alternative design (Range S) with adapter panels and wall abutment extension (discount).

DORMA Hüppe
Raumtrennsysteme GmbH + Co. KG
Industriestraße 5
D-26655 Westerstede/Ocholt
Postfach 2190
D-26648 Westerstede
Phone +49 4409 666-0
Fax +49 4409 666-489
info.hueppe@dorma.com
www.dorma-hueppe.com

DORMA UK Ltd.
Hüppe Movable Walls Division
Wilbury Way
Hitchin
GB-Hertfordshire SG4 0AB
Phone +44 1 462 477600
Fax +44 1 462 477601
movablewalls@dorma-uk.co.uk
www.dorma-uk.co.uk

DORMA Gulf Door Controls FZE
Jebel Ali Free Zone South
Plot No. S 20135
Road No. SW 301 G
P.O. Box 17268
Dubai – United Arab Emirates
Phone +971 4 8020400
Fax +971 4 8869100/8869101
deepak@dormagulf.com
www.dorma.com/gulf

DORMA Hüppe Asia Sdn. Bhd
P.O. Box 55
PLO 217 Kawasan Perindustrian
Senai IV
MY-81400 Senai, Johor
Phone +60 7 5985730
Fax +60 7 5985729
www.dorma-hueppe.com

DORMA Polska Sp. z o.o
Dział ścian przesuwanych
DORMA Hüppe
Ul. Warszawaska 72
PL-05-520 Konstancin Jeziorna
Phone +48 22 7365900
Fax +48 22 7365901
hueppe@dorma.com.pl
www.dorma.pl